

PROJECT DETAILS

LOCATION

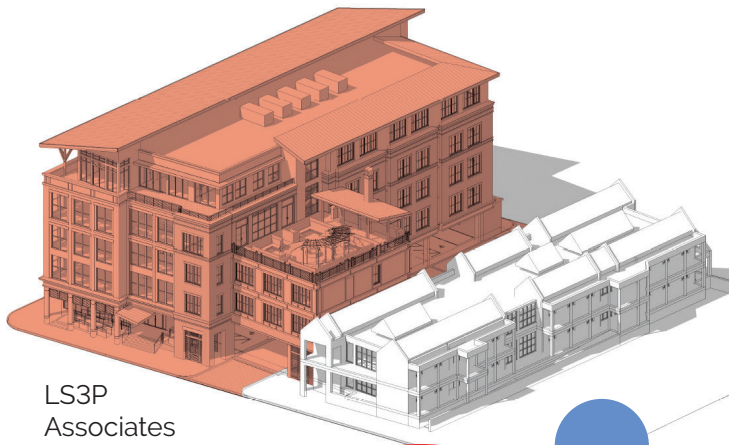
Adjacent to the current House—spanning the entire block of Calhoun Street between Barre and Gadsden Streets

SIZE

Total Project Estimated 58,000 square feet

COSTS

Total \$25,000,000



FEATURES

- 53 bedrooms with private bathrooms
- Two elevators that can accommodate a stretcher (current House has no elevator)
- Large kitchen and dining room
- Classroom (siblings often attend class while their brother or sister is in the hospital)
- Communal spaces for families to find support in one another
- Separate play areas for toddlers, youth, and teens
- Outdoor terrace, roof garden, and family grilling area
- Laundry rooms on all floors
- Quiet areas for families
- Business Center
- Welcome Desk
- Volunteer Parking
- 4 Family Galleys

BEDROOMS • Target 53 in total

- Each large enough to accommodate two queen size beds
- Private bathrooms
- Natural Light
- Fans for circulation
- Independent temperature control
- Long stay rooms—with room for a pull out couch

PLAYROOMS BY INTEREST AND AGE

- Toddlers (Ages 1–5)
- Youth (Ages 6–11)
- Teens (Ages 12–18)
- Sensory Room (to assist with overstimulation)
- Toy Closet (Each child's welcome gift of choice)

TIMETABLE

- 2025 – Construction



Ronald McDonald
House Charities®
Charleston

Keeping families close®

HOME-LIKE CONSIDERATIONS

ENVIRONMENTAL

Natural Light

Flood Area Considerations

Sustainable

Outdoors access

ATMOSPHERE

Inviting and Clean

Efficient

Safe

Reliable Wi-Fi Access

Charleston Amenities

SPECIFICS

Variety of common areas in sizes and purposes

Connectivity to the current House

Transition from the Medical District to the Neighborhood

Areas of play for a variety of ages

Volunteer working areas

STRUCTURAL

Covered parking for volunteer loading and unloading

Elevators that may accommodate a stretcher for emergencies

Oversized side walks

Public Safety staging area for family pickups and drop offs

The design of the building has been influenced by the following:

- ➔ Family, volunteer, medical professional, donor, and staff focus groups
- ➔ Sharing and viewing of other RMHC® chapter's facilities
- ➔ Architects, Developers and Construction Professionals and MUSC Facilities Team insights
- ➔ Family-center design concepts
- ➔ Evidence-based principles

