

PROJECT DETAILS

LOCATION

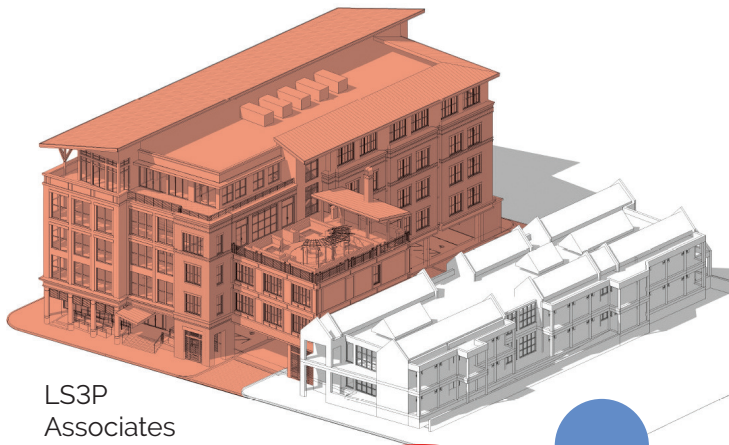
Adjacent to the current House—spanning the entire block of Calhoun Street between Barre and Gadsden Streets

SIZE

Total Project Estimated 42,000 square feet

COSTS

Total \$25,000,000



FEATURES

- ➔ 46 bedrooms with private bathrooms
- ➔ Two elevators that can accommodate a stretcher (current House has no elevator)
- ➔ Large kitchen and dining room
- ➔ Classroom (siblings often attend class while their brother or sister is in the hospital)
- ➔ Communal spaces for families to find support in one another
- ➔ Separate play areas for toddlers, youth, and teens
- ➔ Laundry rooms on all floors
- ➔ Quiet areas for families
- ➔ Outdoor Patio
- ➔ WelcomeDesk
- ➔ Volunteer Parking
- ➔ 4 Family Kitchen Galleys

BEDROOMS • Target 46 in total

- ➔ Each large enough to accommodate two queen size beds
- ➔ Private bathrooms
- ➔ Natural Light
- ➔ Fans for circulation
- ➔ Independent temperature control
- ➔ Long stay rooms—with room for a pull out couch

PLAYROOMS BY INTEREST AND AGE

- ➔ Toddlers (Ages 1–5)
- ➔ Youth (Ages 6–11)
- ➔ Teens (Ages 12–18)
- ➔ Toy Closet (Each child's welcome gift of choice)

TIMETABLE

- ➔ Early 2025 – Construction

LS3P
Associates



Ronald McDonald
House Charities®
Charleston

Keeping families close®



HOME-LIKE CONSIDERATIONS

ENVIRONMENTAL

Natural Light

Flood Area Considerations

Sustainable

Outdoors access

ATMOSPHERE

Inviting and Clean

Efficient

Safe

Reliable Wi-Fi Access

Charleston Amenities

SPECIFICS

Variety of common areas in sizes and purposes

Connectivity to the current House

Transition from the Medical District to the Neighborhood

Areas of play for a variety of ages

Volunteer working areas

STRUCTURAL

Covered parking for volunteer loading and unloading

Elevators that may accommodate a stretcher for emergencies

Oversized side walks

Public Safety staging area for family pickups and drop offs

The design of the building has been influenced by the following:

- ➔ Family, volunteer, medical professional, donor, and staff focus groups
- ➔ Sharing and viewing of other RMHC® chapter's facilities
- ➔ Architects, Developers and Construction Professionals and MUSC Facilities Team insights
- ➔ Family-center design concepts
- ➔ Evidence-based principles

